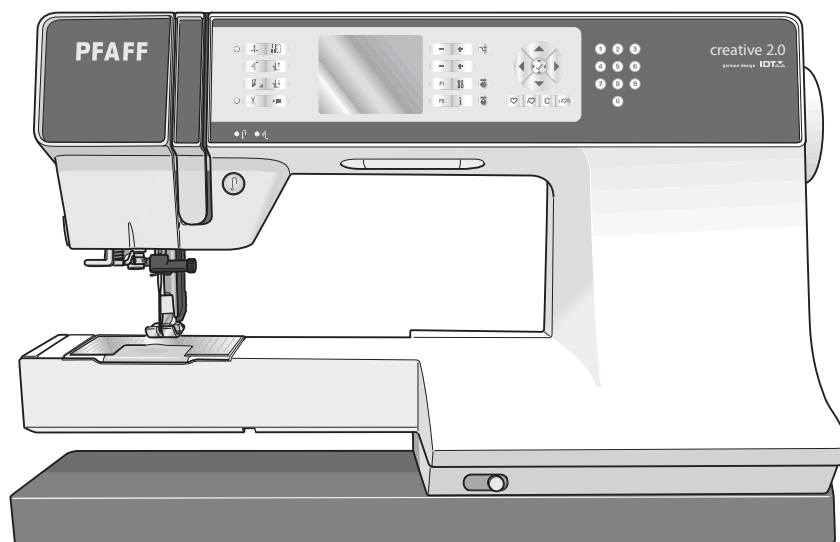


# PFAFF®

## Creative 2.0

### Parts list



**Nicht nummerierte Teile im Katalog werden nicht geliefert.**

**The parts mentioned without number in the parts list are not available.**

**Les pièces qui ne sont pas numérotées dans la liste de pièces détachées ne peuvent être livrées.**

Bei Bestellung von Ersatzteilen muss die Modell-Nr. der Maschine, die Seitenzahl des Kataloges und die Teilenummer angegeben werden.

Prière d'indiquer dans vos commandes de pièces de rechange, le numéro de la machine, le numéro de la page dans la liste des pièces détachées, ainsi que les numéros des pièces commandées.

When ordering spare parts, please state the model number, the page number in the catalogue of spare parts and the number of the parts called for.



Please note that on disposal, this product must be safely recycled in accordance with relevant National legislation relating to electrical/electronic products. If in doubt please contact your retailer for guidance.

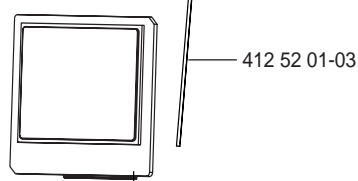
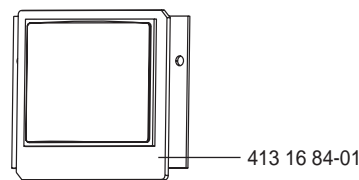
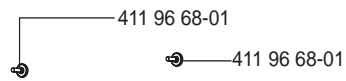
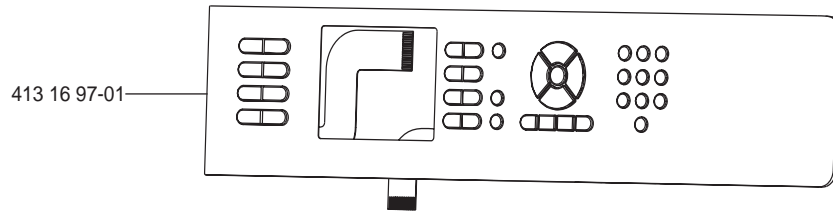


Bitte beachten Sie, dass hinsichtlich der Entsorgung dieses Produkts, vorschriftsmäßig entsprechend der gültigen nationalen Gesetzgebung für elektrische/elektronische Produkte, recycelt werden muss. Bei Zweifel setzen Sie sich bitte mit Ihrem Fachhändler in Verbindung.

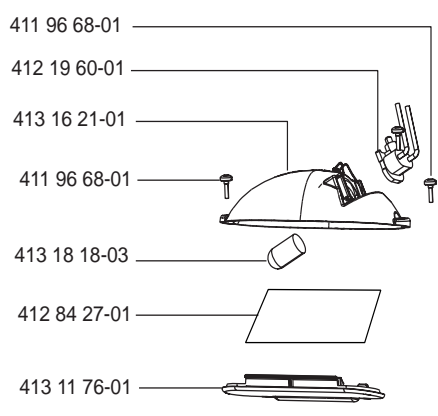
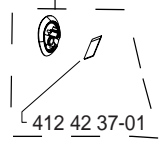


Veuillez noter qu'en cas de destruction, ce produit doit bénéficier d'un recyclage sécurisé, conforme à la législation nationale applicable aux produits électriques/électroniques. En cas de doute, veuillez contacter votre distributeur agréé.

- All casted parts within our products are marked with name of material if allowed by size.
- All molded plastic parts within our products are marked with name of material if allowed by size.

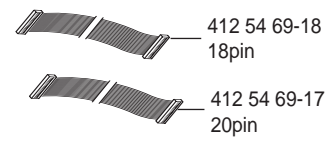
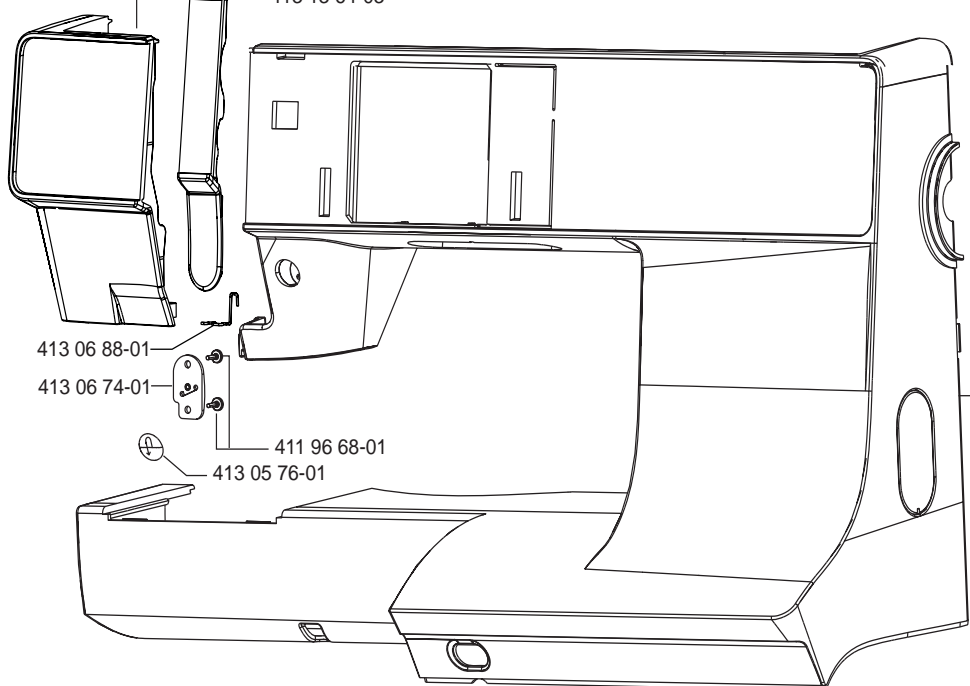


413 06 62-01

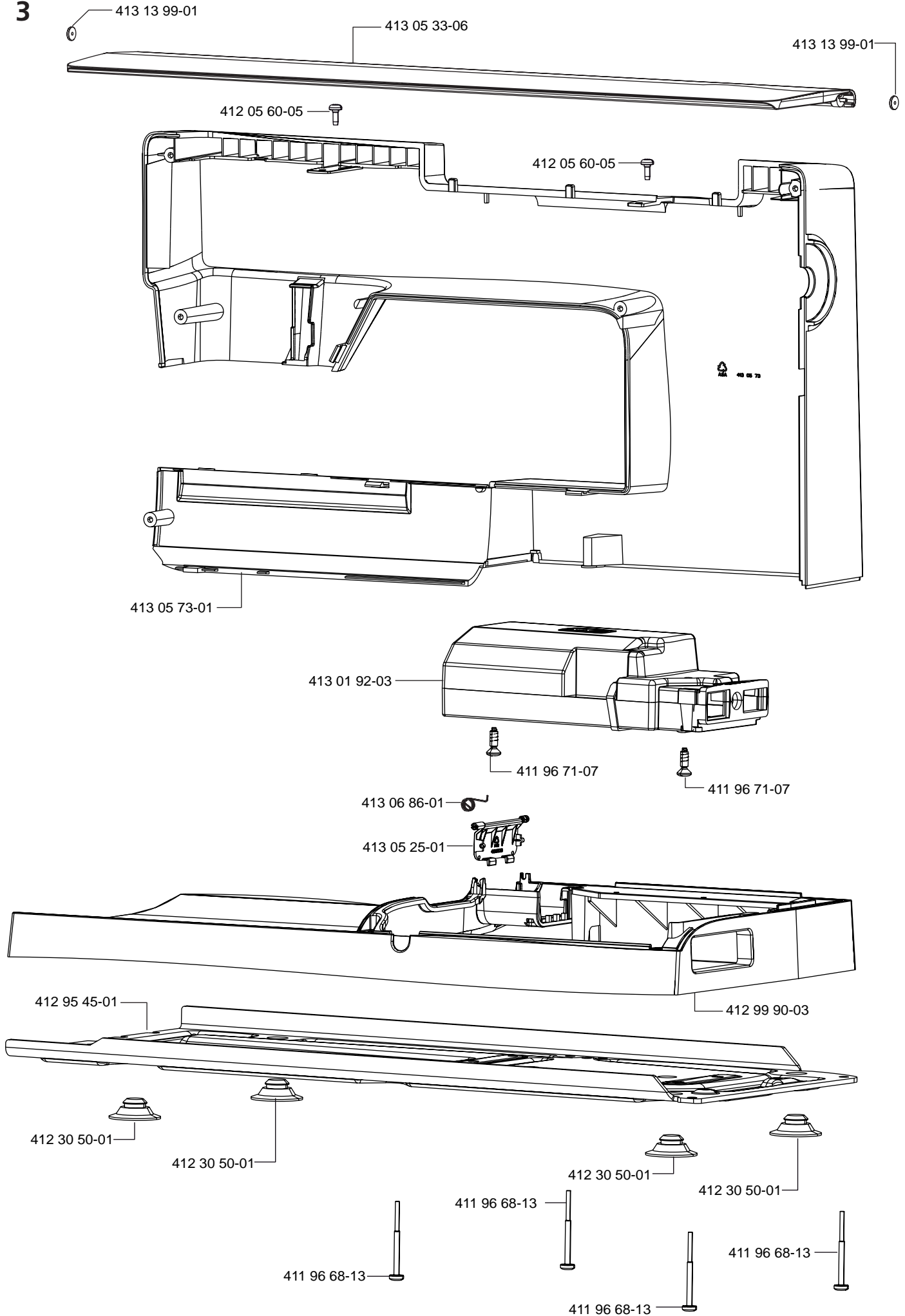


413 13 66-03

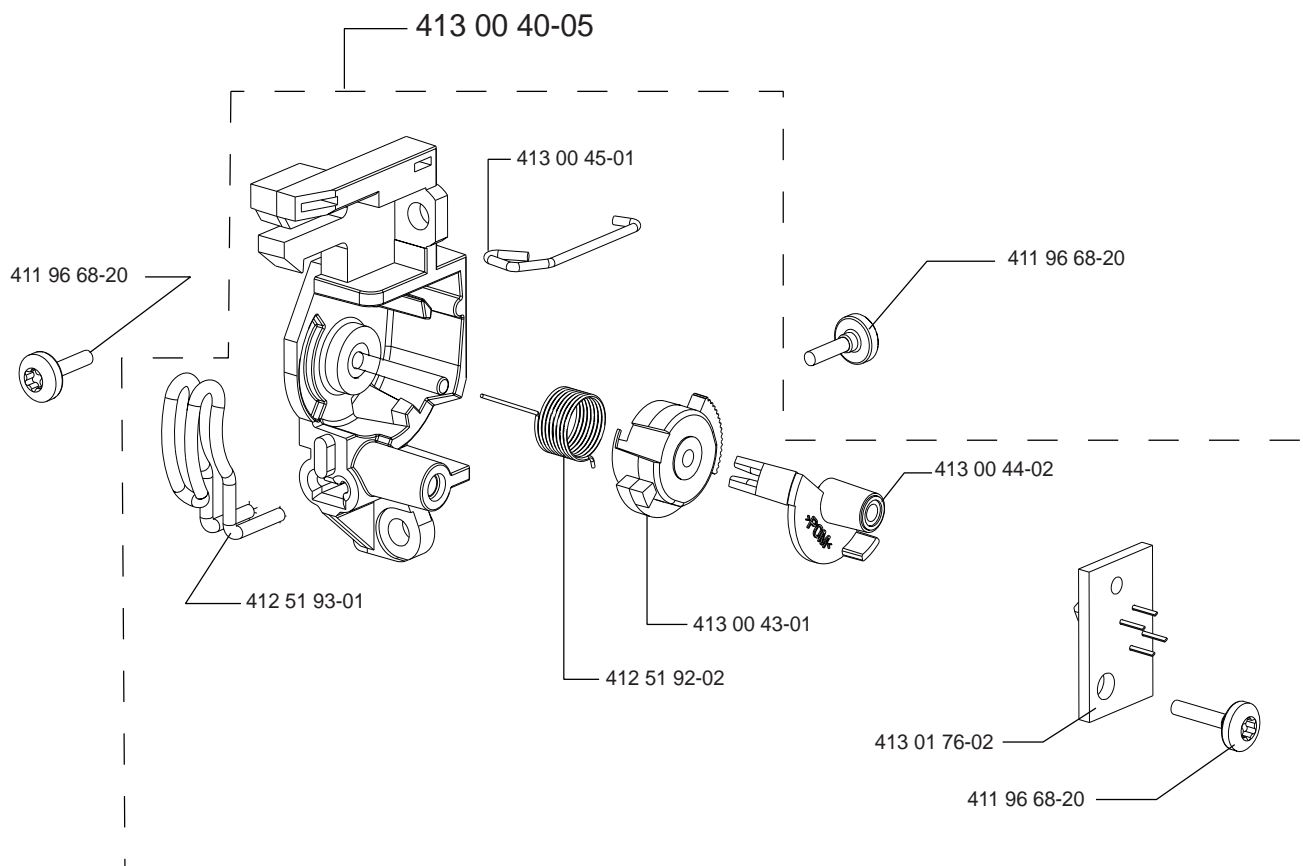
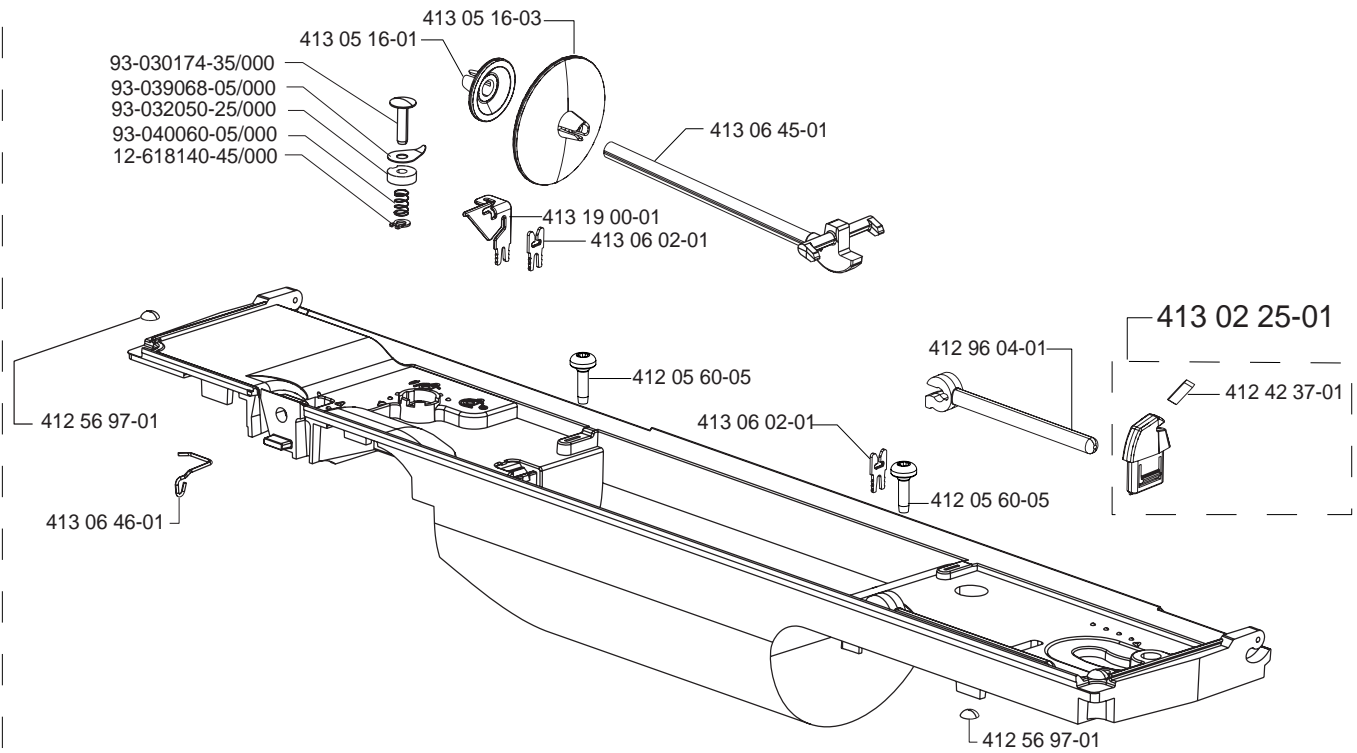
413 13 64-03

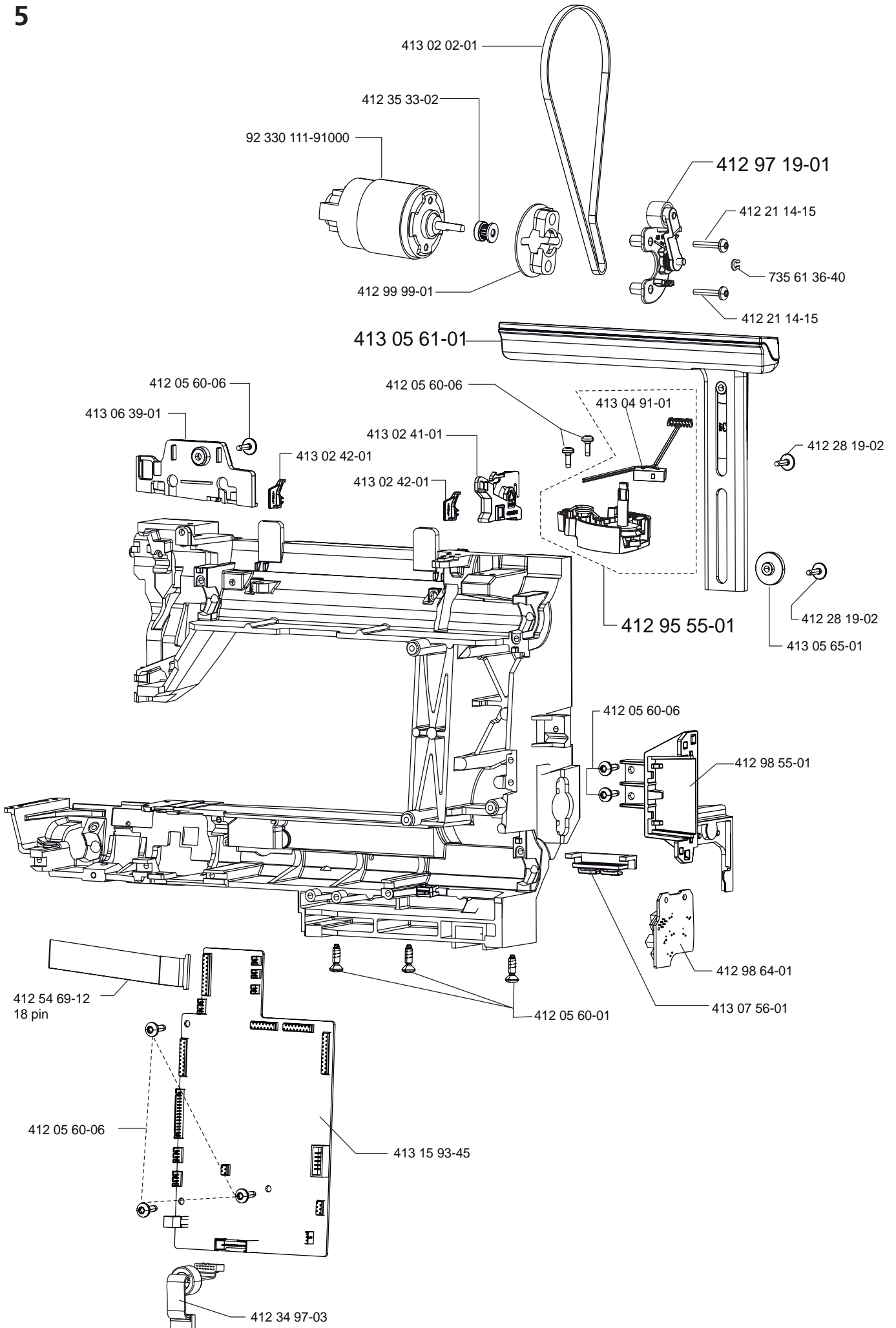


3

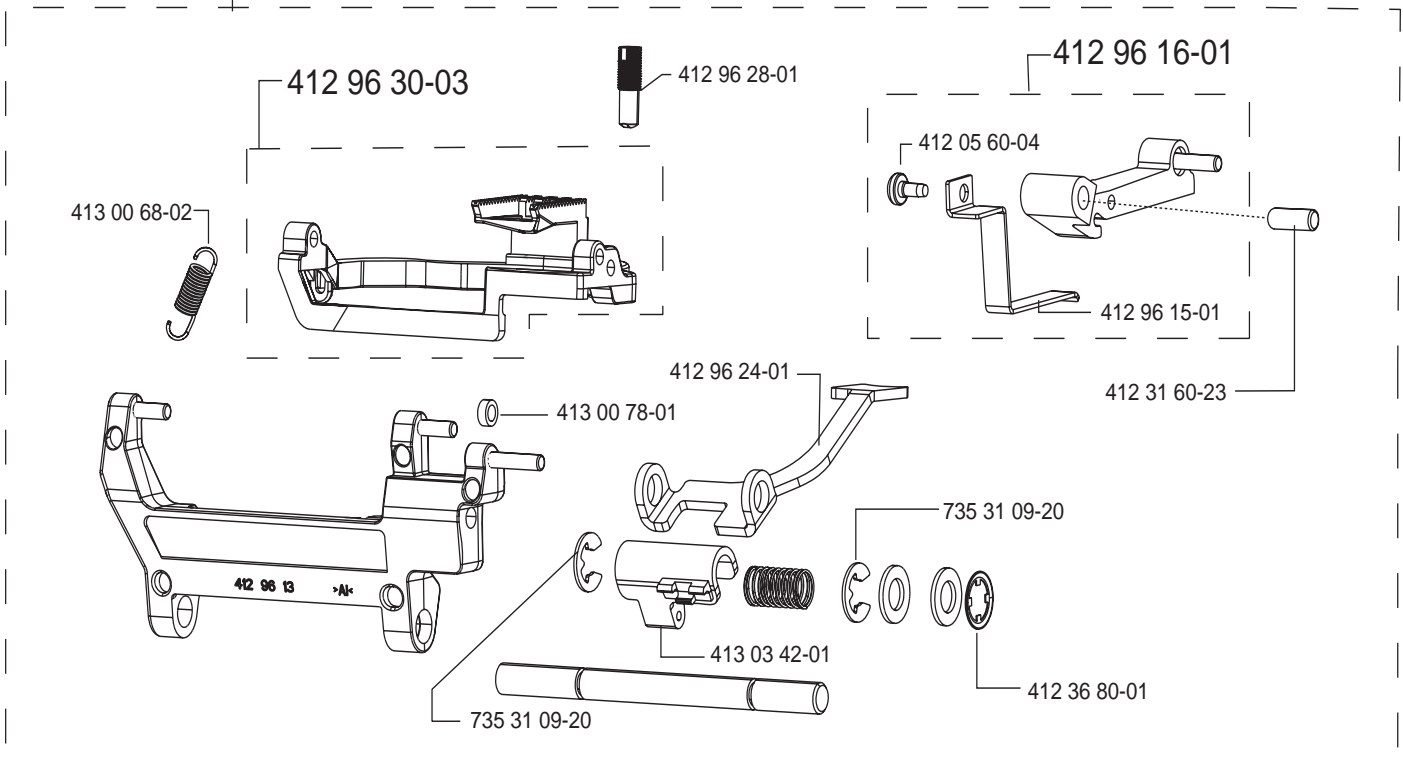


413 06 47-04





412 96 11-07



413 16 94-01



413 16 94-01

413 02 54-01

412 96 36-01

412 96 37-01

412 96 35-01

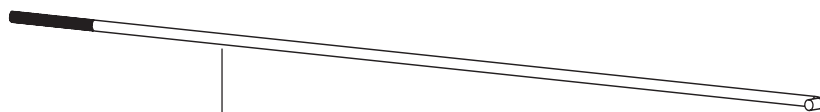
412 96 17-01

412 96 18-01

413 03 44-02

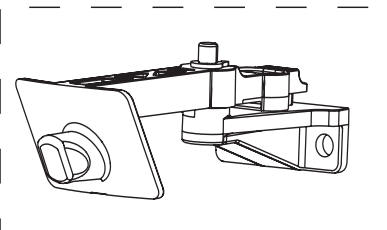
411 96 87-03

412 05 60-11

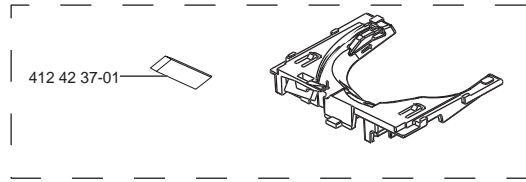
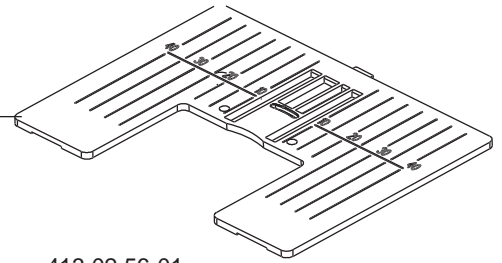


413 03 41-01

413 14 22-01



412 96 43-05



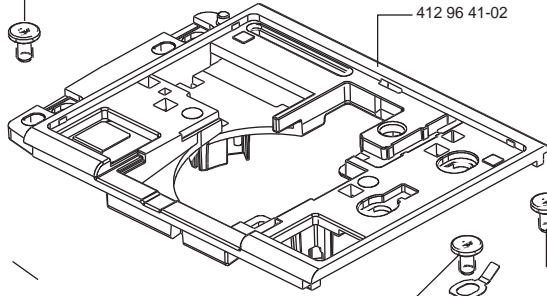
412 42 37-01

413 02 56-01

412 28 79-03

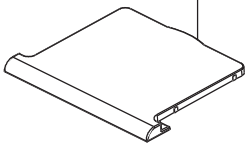
412 28 79-03

412 96 41-02



412 96 40-02

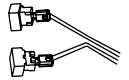
412 96 39-01



412 28 79-03

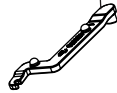
412 99 77-01

412 28 79-03



413 10 15-01

413 00 73-01



413 01 00-01



412 28 05-01



413 00 71-01



413 07 22-01

413 11 67-01



413 07 25-01

411 96 68-28



735 61 24 40

735 61 24 40



412 05 60-06

412 05 60-06

412 42 37-01

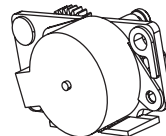


413 04 73-01

413 00 77-01



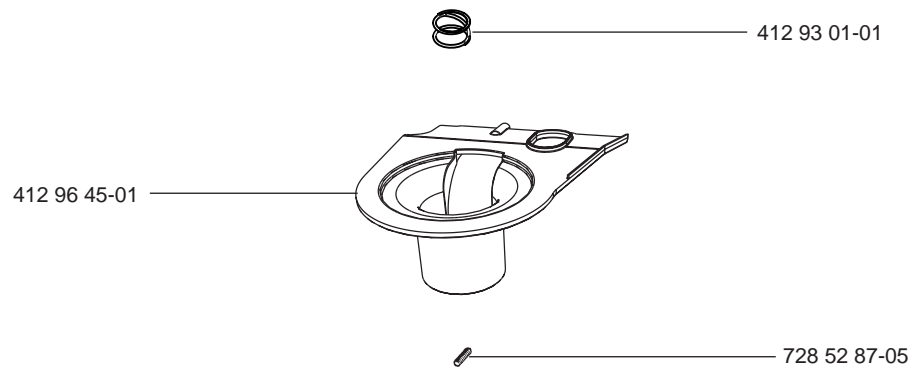
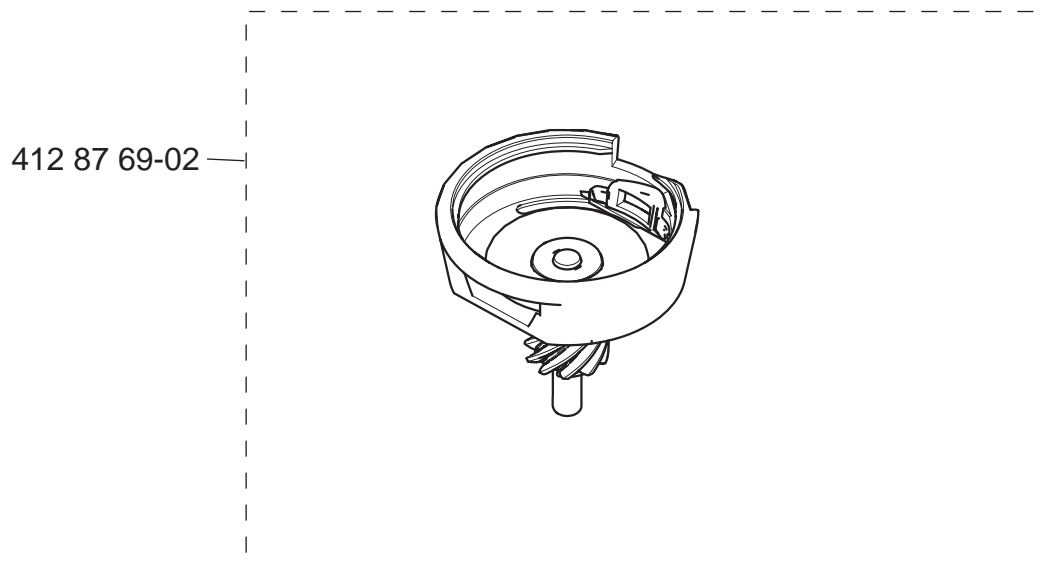
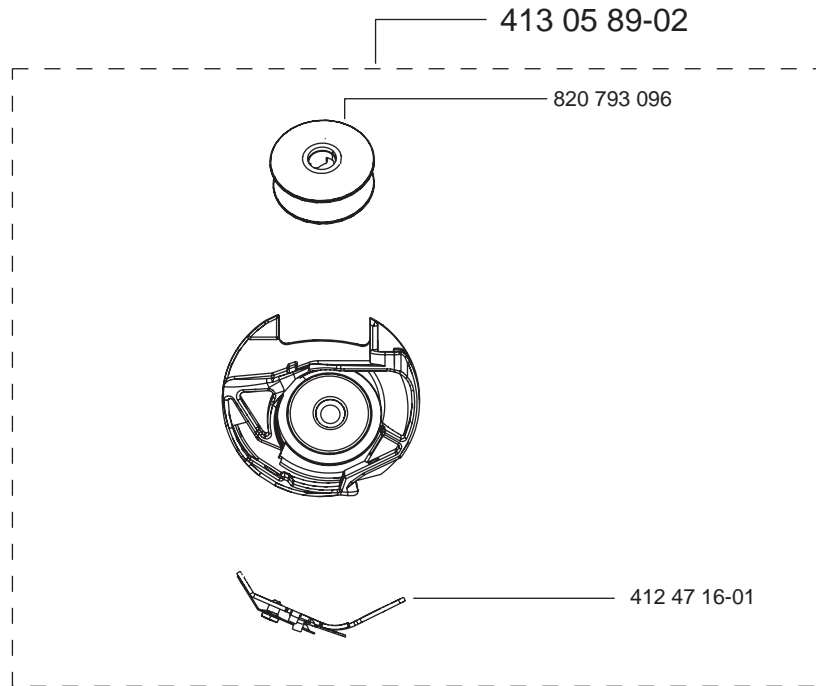
412 96 68-28



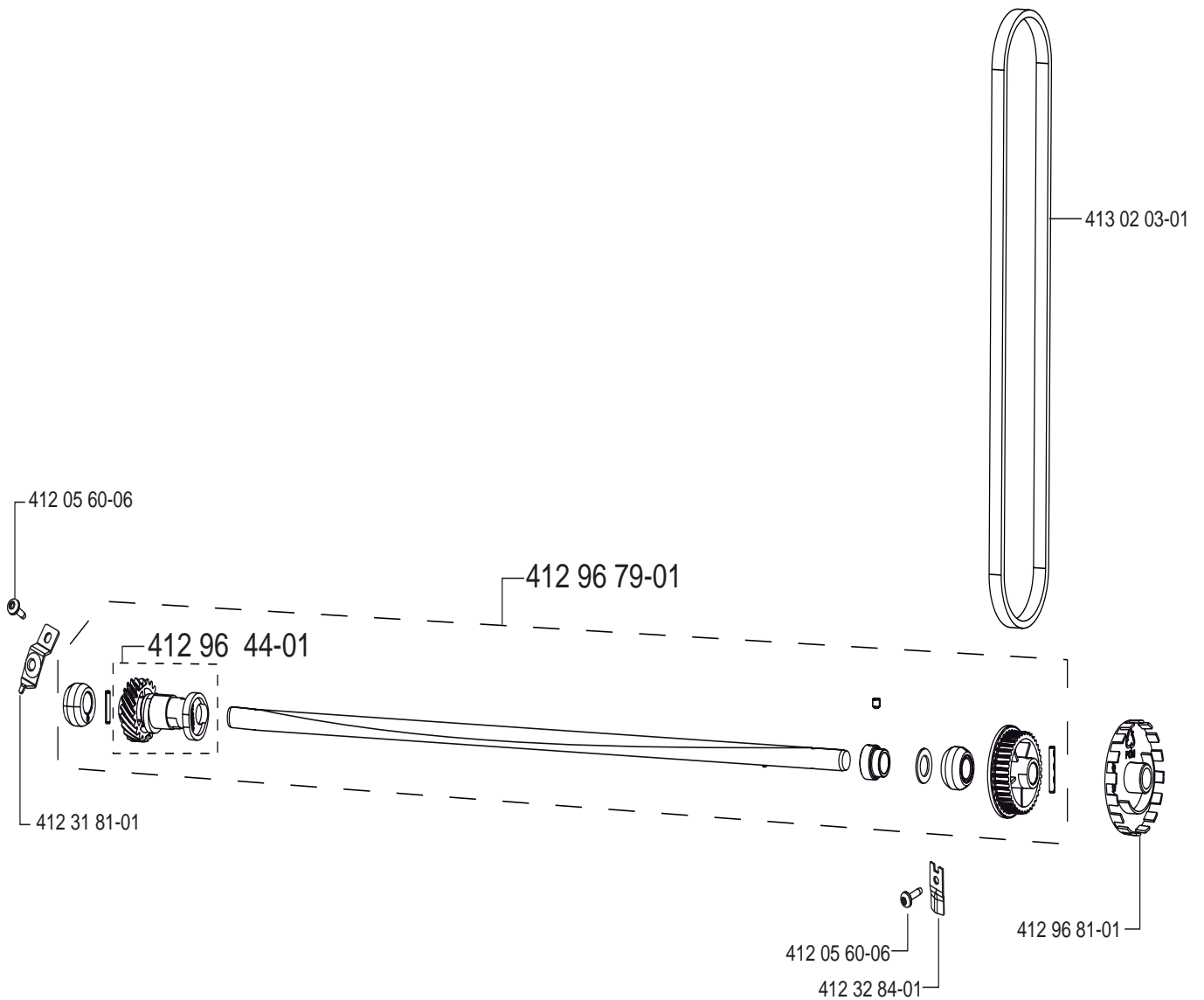
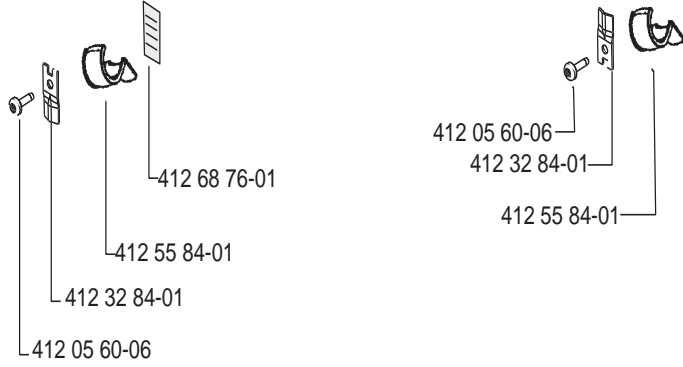
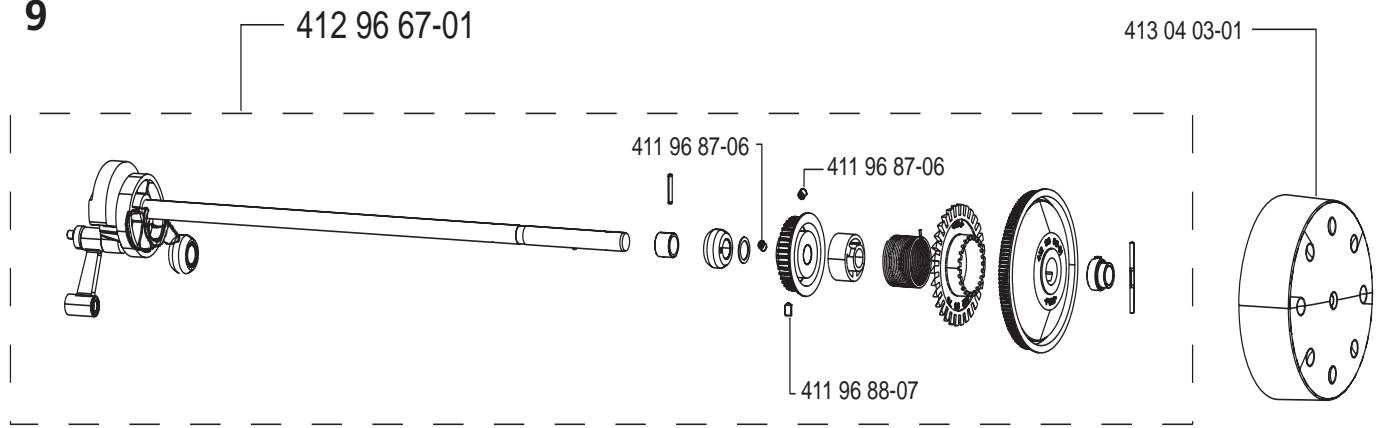
412 96 68-28

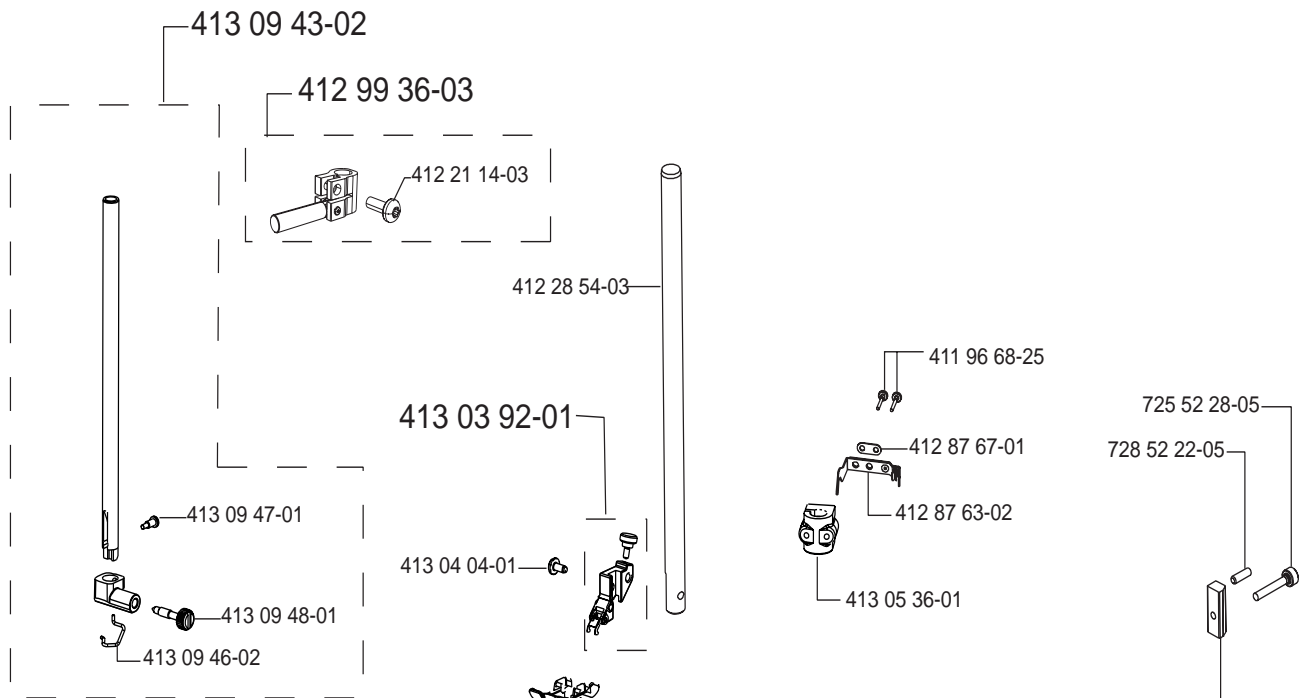
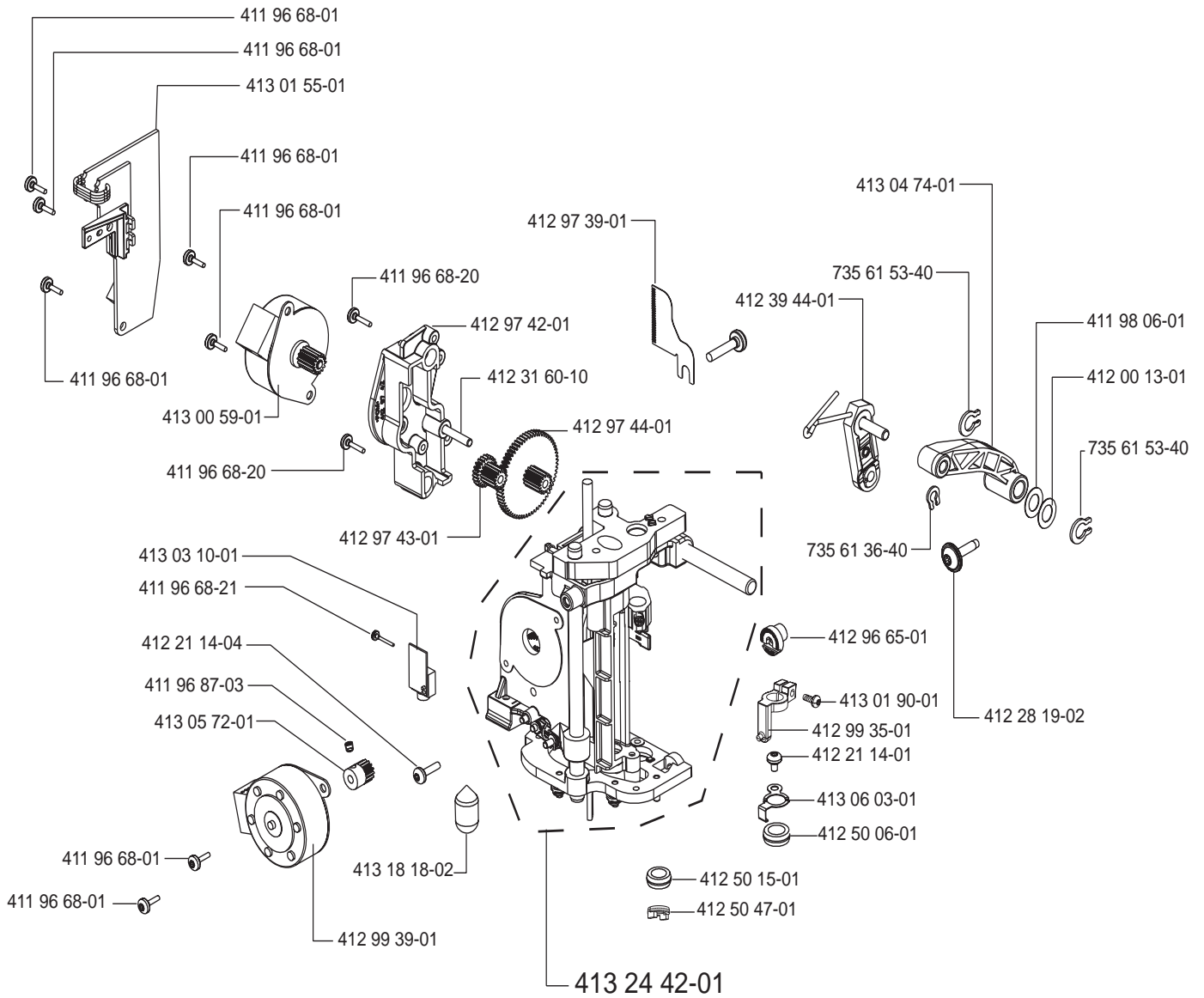
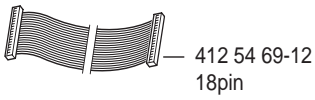
413 00 74-01



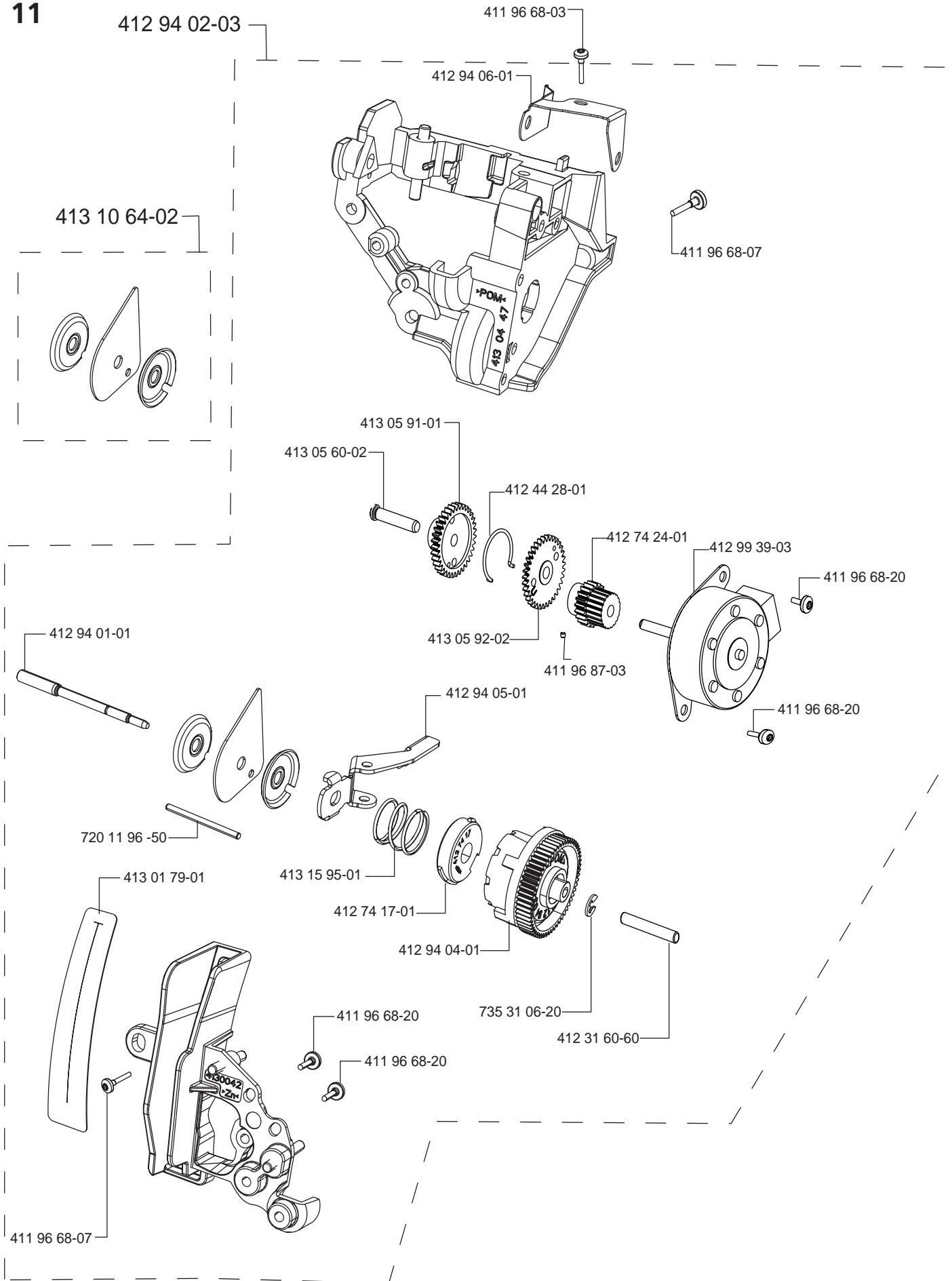


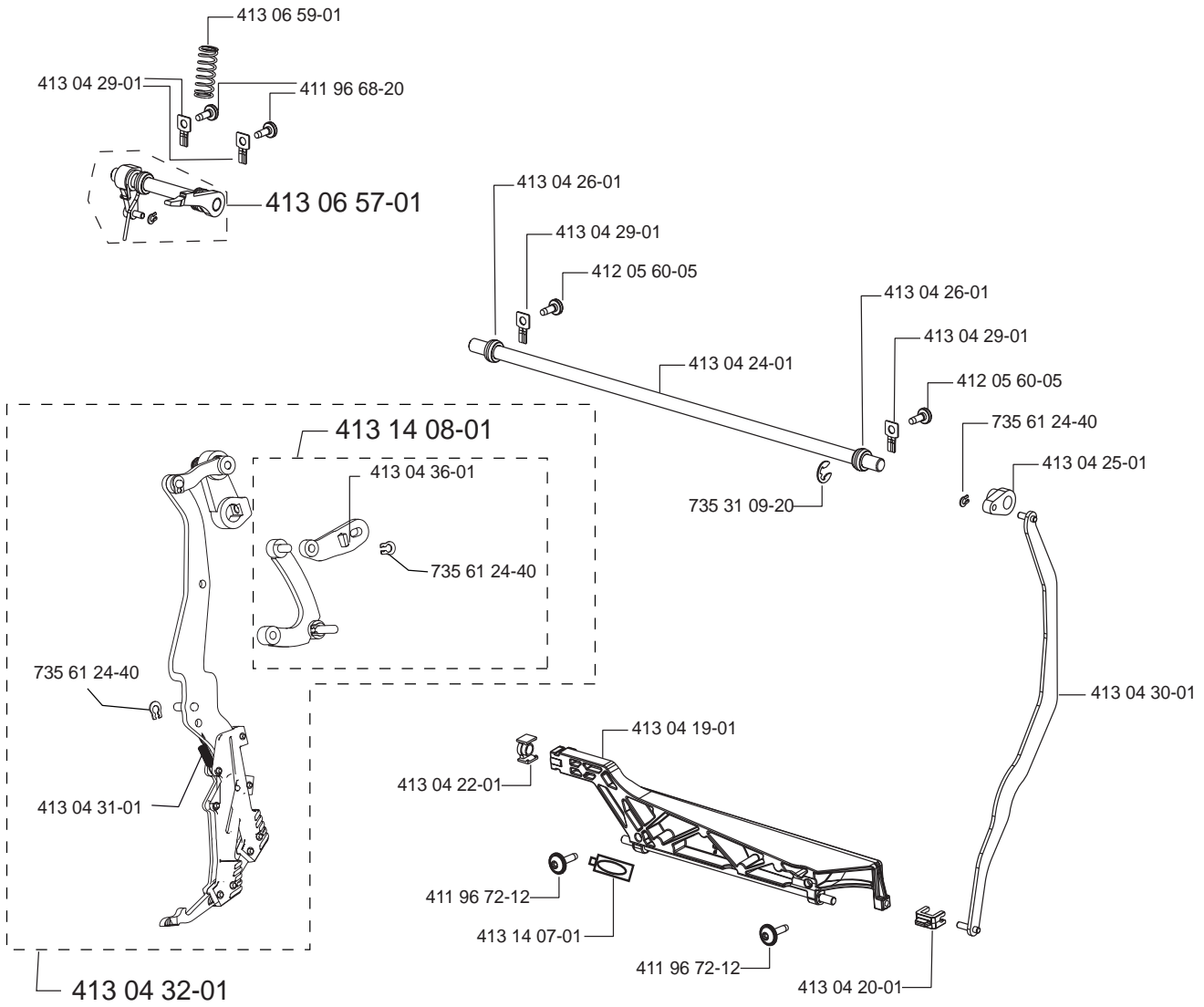
9





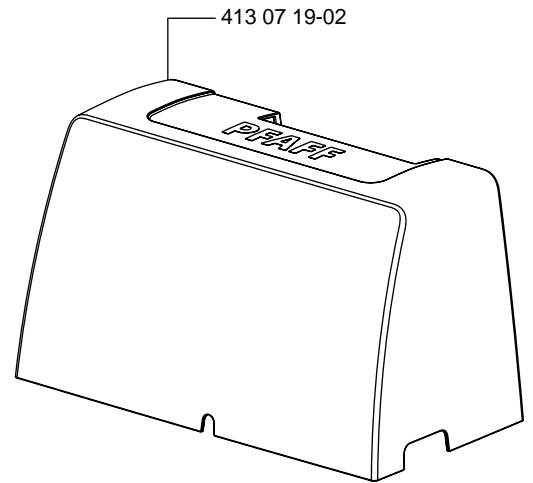
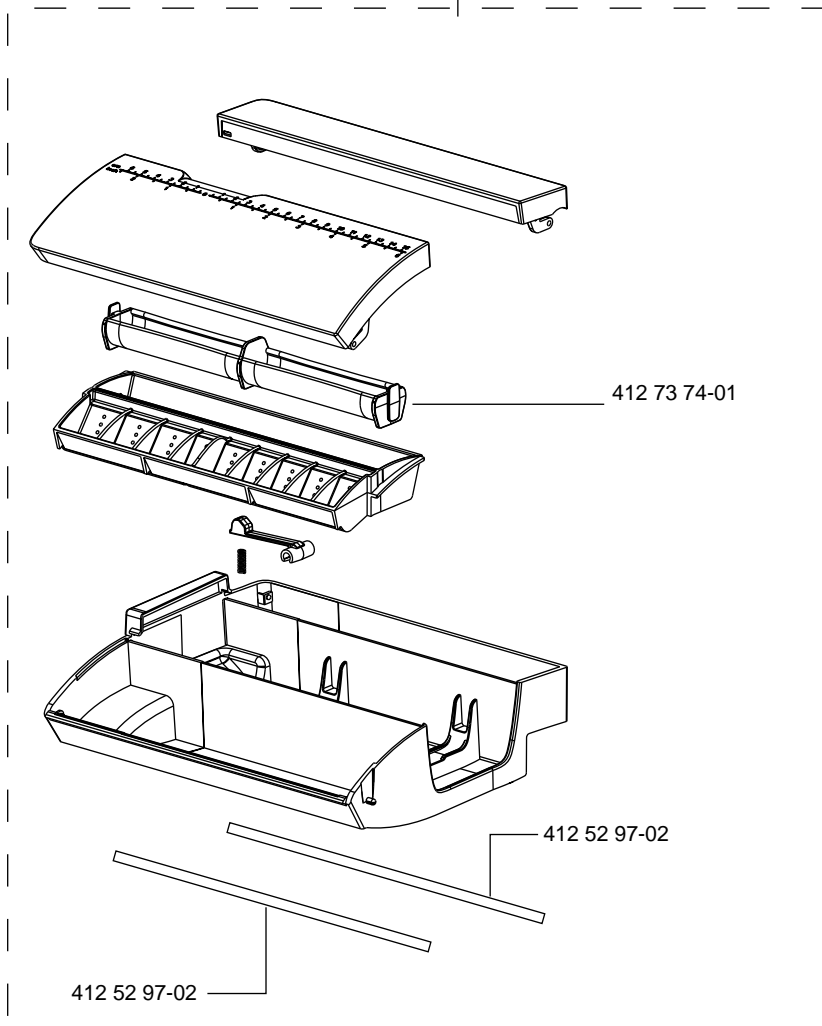
# 11



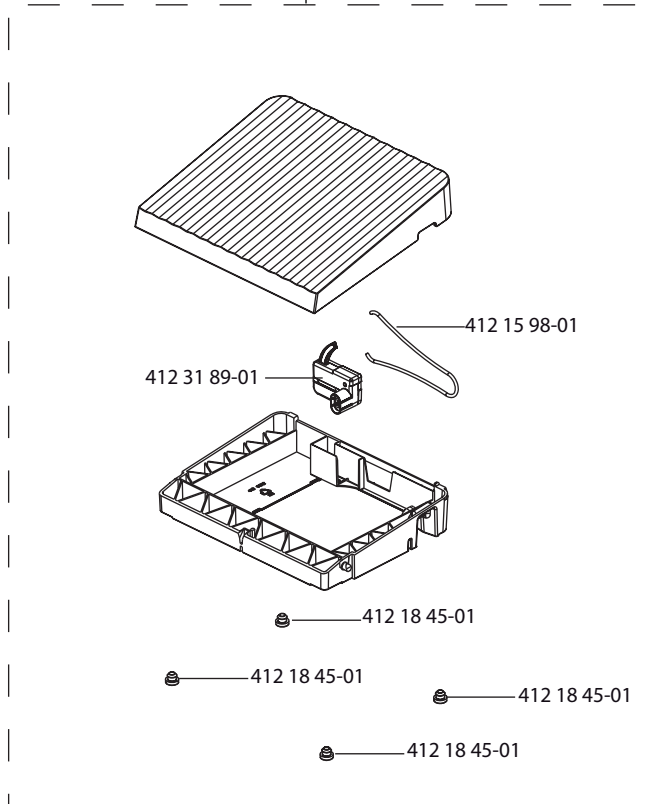


13

413 08 39-03

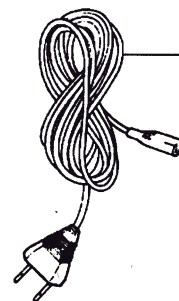


412 99 14-01

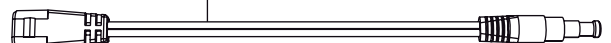


POWER CORD

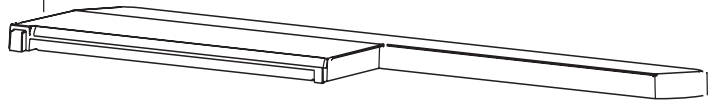
- 412 15 78-01 / 220V
- 412 15 79-02 / 120V JAP
- 412 15 79-03 / 120V
- 412 15 80-02 / UK
- 412 15 81-01 / AUS



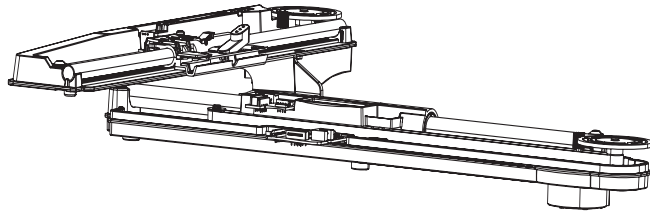
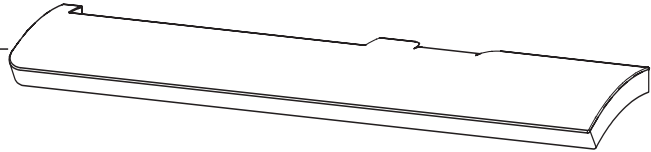
413 02 15-01



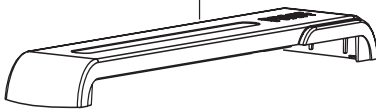
413 12 62-01



413 12 63-01



413 12 65-01



413 02 75-01



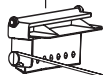
413 12 66-01



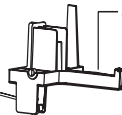
412 72 14-01



413 02 77-01



413 02 76-01



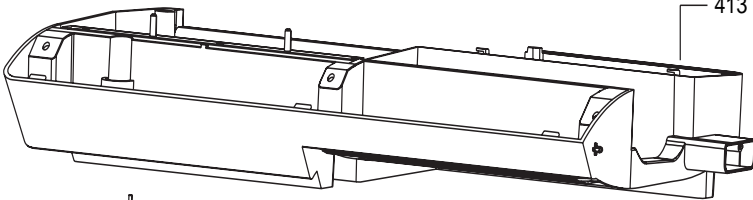
413 12 64-01



413 02 78-02



413 12 61-01



413 02 88-01



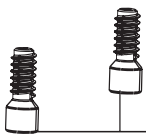
411 96 68-20

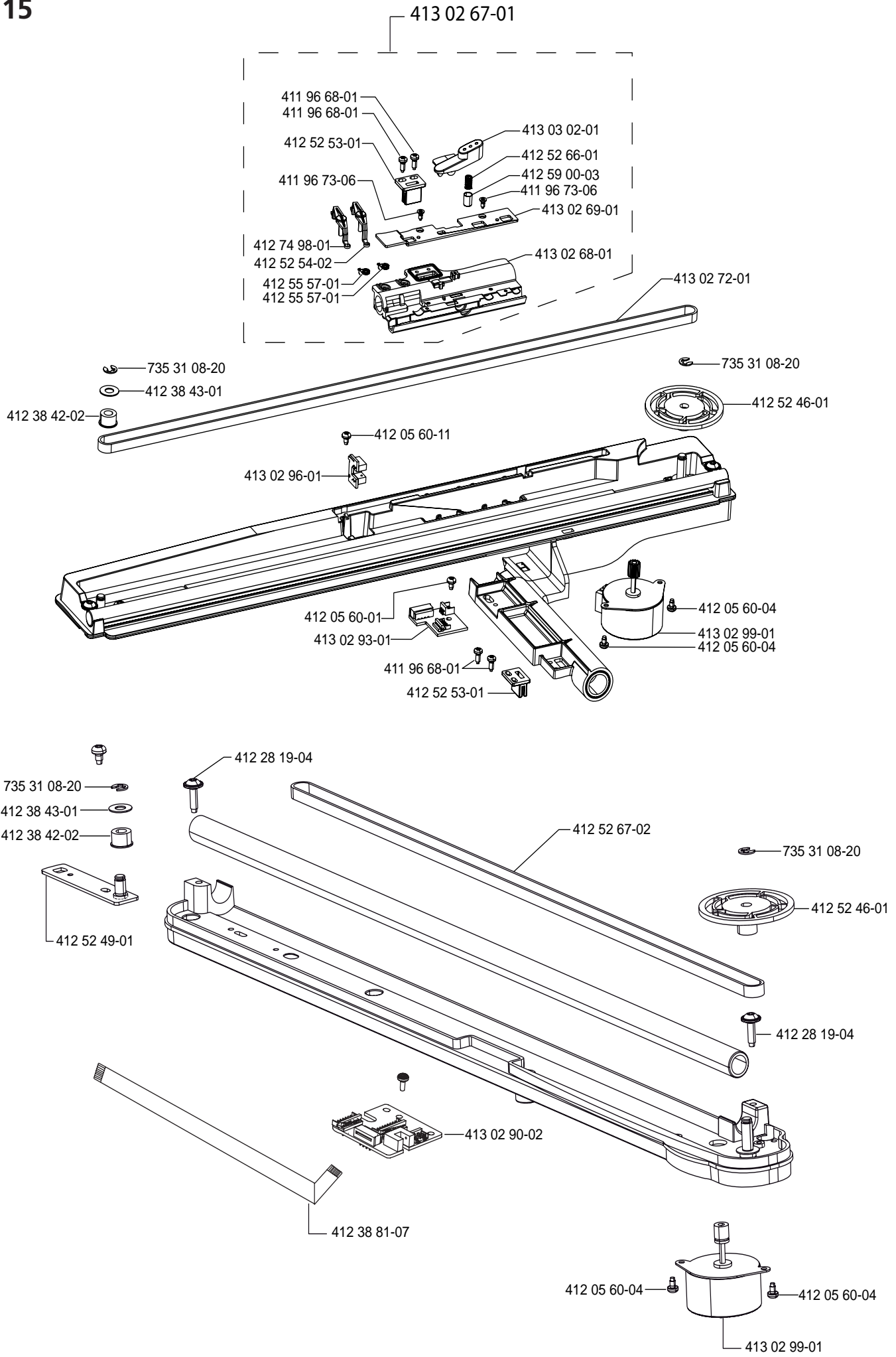


8X 411 96 68-07



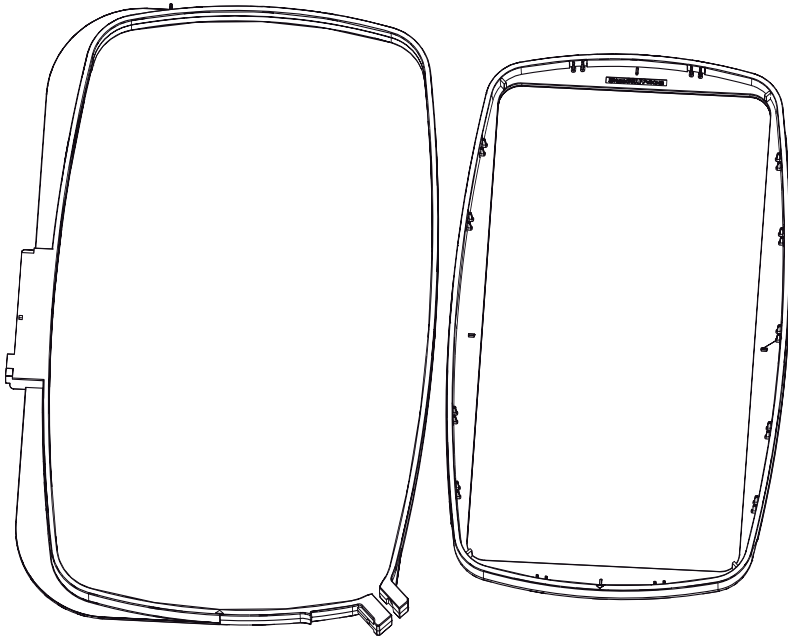
413 02 85-01



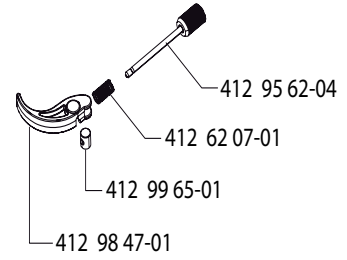




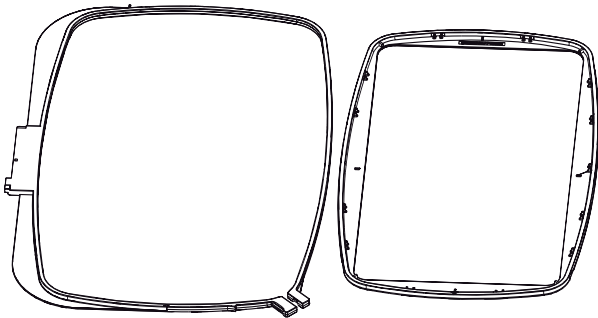
260x200



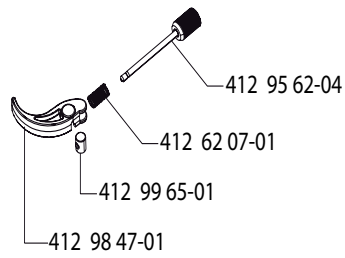
413 11 65-02



120x120



412 96 82-02



Part nr	Description	Page	Part nr	Description	Page
411 96 68-01	Screw	2,10,15	412 52 49-01	Adjuster belt tension emb.unit	15
411 96 68-03	Screw	11	412 52 53-01	Holder	15
411 96 68-07	Screw	11,14	412 52 54-02	Sensor emb. Frame	15
411 96 68-13	Screw	3	412 52 66-01	Spring	15
411 96 68-20	Screw	4,11,12,14	412 52 67-02	Belt X-arm	15
411 96 68-21	Screw	10	412 52 97-02	Friction tape	13
411 96 68-25	Screw	10	412 54 69-12	Cable 18pin	5,10
411 96 68-28	Screw	7	412 54 69-17	Cable 20pin	2
411 96 71-07	Screw	3	412 54 69-18	Cable 18pin	2
411 96 72-12	Screw	12	412 55 57-01	Spring	15
411 96 73-06	Screw	15	412 55 84-01	Damper	9
411 96 87-03	Set screw	6,10,11	412 56 97-01	Damper	4
411 96 87-06	Screw	9	412 59 00-03	Cover	15
411 96 88-07	Screw, silver	9	412 62 07-01	Spring	16
411 98 06-01	Washer	10	412 68 76-01	Alu foil for arm shaft	9
412 00 13-01	Washer	10	412 72 14-01	Spring	14
412 05 60-01	Screw	5,15	412 73 74-01	Bobbin holder	13
412 05 60-04	Screw	6,15	412 74 17-01	Nut	11
412 05 60-05	Screw	3,4,12	412 74 24-01	Gog wheel	11
412 05 60-06	Screw	5,7,9	412 74 98-01	Sensor hoop	15
412 05 60-11	Screw	6,15	412 84 27-01	Cooling tape	2
412 15 78-01	Powercord 220V	13	412 87 63-02	Needle threader	10
412 15 79-02	Powercord 120V JAP	13	412 87 67-01	Washer	10
412 15 79-03	Powercord 120V	13	412 87 69-01	Hook cpl.	8
412 15 80-02	Powercord UK	13	412 93 01-01	Spring	8
412 15 81-01	Powercord AUS	13	412 94 01-01	Shaft	11
412 15 98-01	Spring	13	412 94 02-03	Thread tension unit cpl.	11
412 18 45-01	Foot	13	412 94 04-01	Housing Thread tension	11
412 19 60-01	Lamp holder	2	412 94 06-01	Contact spring	11
412 21 14-01	Screw	10	412 95 55-01	Bobbin winder cpl	5
412 21 14-03	Screw	10	412 95 62-04	screw	16
412 21 14-04	Screw	10	412 96 04-01	Thread reel pin	4
412 21 14-15	Screw	5	412 96 11-07	Feed unit cpl.	6
412 28 05-01	Screw	7	412 96 15-01	Spring	6
412 28 19-02	Screw	5,6,10	412 96 16-01	Feed length link cpl.	6
412 28 19-04	Screw	15	412 96 17-01	Spring	6
412 28 54-03	Presserbar	10	412 96 18-01	Guide block	6
412 28 79-03	Screw	7	412 96 24-01	Lever feed lift	6
412 30 50-01	Foot	3	412 96 28-01	Adjustingscrew	6
412 31 60-10	Pin	10	412 96 30-03	Feed dog cpl.	6
412 31 60-23	Pin	6	412 96 35-01	feed length unit cpl.	6
412 31 60-60	shaft	11	412 96 36-01	Spring	6
412 31 81-01	Clamp	9	412 96 37-01	screw	6
412 31 89-01	control unit	13	412 96 39-01	Bobbin window	7
412 32 84-01	Clamp	9	412 96 40-02	Hook cover cpl.	7
412 34 97-03	Cable power supply	5	412 96 41-02	Hook cover	7
412 35 33-02	Driving wheel	5	412 96 43-05	Stitch plate	7
412 36 80-01	Locking washer	6	412 96 44-01	Worm gear cpl.	9
412 38 42-02	Cog wheel	15	412 96 45-01	Dust cover	8
412 38 43-01	Washer	15	412 96 65-01	Calibration stop	10
412 38 81-07	Flex cable emb unit	15	412 96 66-01	Wedge	10
412 39 44-01	Thread take up	10	412 96 67-01	Upper shaft cpl.	9
412 42 37-01	Knife	2,4,7	412 96 68-28	Screw	7
412 44 28-01	Spring	11	412 96 79-01	Lower shaft cpl.	9
412 46 45-01	Screw bobbin case	8	412 96 81-01	Screen lower shaft	9
412 47 16-01	Tension unit bobbin case	8	412 96 82-02	Hoop 120x120	16
412 50 06-01	Bushing, presserbar	10	412 97 19-01	Motor belt tension device	5
412 50 15-01	Bushing, needlebar	10	412 97 39-01	Flag presser bar	10
412 50 47-01	Holder	10	412 97 42-01	Gearhouse, P-foot servo	10
412 51 92-02	Checkspring	4	412 97 43-01	Gear wheel P-foot servo prim	10
412 51 93-01	Thread guide	4	412 97 44-01	Gear wheel P-foot servo sec	10
412 52 01-03	Sealing	2	412 98 47-01	Locking handle	16
412 52 46-01	Cog wheel	15	412 98 55-01	Holder synchronizer board	5

<b>Part nr</b>	<b>Description</b>	<b>Page</b>	<b>Part nr</b>	<b>Description</b>	<b>Page</b>
412 98 64-01	Synchronizer board	5	413 04 31-01	Spring	12
412 99 14-01	Foot control cpl.	13	413 04 32-01	Lever IDT cpl.	12
412 99 35-01	Needle threader stop	10	413 04 36-01	Lower slewing bracket, IDT	12
412 99 36-03	Cross head cpl.	10	413 04 73-01	Knife holder cpl.	7
412 99 39-01	Step motor, needlebar	10	413 04 74-01	Take up link	10
412 99 39-03	Stepmotor tension unit	11	413 04 91-01	Bobbin winder sensor	5
412 99 65-01	Nut	16	413 05 16-01	Spool holder small 22mm	4
412 99 77-01	ESD spring	7	413 05 16-03	Spool holder large 45mm	4
412 99 90-03	Bottom cover	3	413 05 25-01	Lid, XY conn.	3
412 99 99-01	Rubber damper	5	413 05 33-06	Lid	3
413 00 40-05	Checkspring unit cpl.	4	413 05 36-01	Holder, needle threader	10
413 00 43-01	Housing checkspring	4	413 05 60-02	Shaft thread tension	11
413 00 44-02	Screen, checkspring	4	413 05 61-01	Handle	5
413 00 45-01	Thread guide	4	413 05 65-01	Bushing, handle	5
413 00 59-01	Stepmotor presserbar	10	413 05 72-01	Cogwheel	10
413 00 68-02	Spring	6	413 05 73-01	Back cover	3
413 00 71-01	Fetcher	7	413 05 76-01	Reversebutton	2
413 00 73-01	Fetcher upper thread	7	413 05 89-02	Bobbin case cpl.	8
413 00 74-01	Stepmotor unit cpl.	7	413 05 91-01	Cog wheel	11
413 00 77-01	Knife holder	7	413 05 92-02	Cogwheel	11
413 00 78-01	Bushing	6	413 06 02-01	Thread guide	4
413 01 00-01	Guide pin	7	413 06 03-01	Clips	10
413 01 55-01	Connecting board	10	413 06 39-01	Cable shield	5
413 01 76-02	Thread sensor board	4	413 06 45-01	Thread reel pin	4
413 01 79-01	Protection thread take up	11	413 06 46-01	Thread guide	4
413 01 90-01	Screw	10	413 06 47-04	Top cover cpl.	4
413 01 92-03	Power supply	3	413 06 57-01	Link, IDT	12
413 02 02-01	Motor belt	5	413 06 59-01	Spring	11
413 02 03-01	Drive belt	9	413 06 62-01	Knife holder cpl.	2
413 02 15-01	Foot control cable	13	413 06 74-01	Board, reversebutton	2
413 02 25-01	Thread cutter cpl.	4	413 06 86-01	Torsion spring	3
413 02 41-01	Cable guide	5	413 06 88-01	Thread guide	2
413 02 42-01	Cable guide	5	413 07 19-02	Cover cpl.	13
413 02 54-01	Nut	6	413 07 22-01	Lever	7
413 02 56-01	Bobbin holder cpl.	7	413 07 25-01	Sensor thread cutter	7
413 02 68-01	Y-sled	15	413 07 56-01	Cable holder	5
413 02 69-01	Panel	15	413 08 39-03	Accessory box cpl.	13
413 02 72-01	Belt, Y-arm	15	413 09 43-02	Needlebar cpl.	10
413 02 75-01	Support arm emb. Unit	14	413 09 46-02	Thread guide	10
413 02 76-01	Latch	14	413 09 47-01	Screw	10
413 02 77-01	Handle	14	413 09 48-01	Screw	10
413 02 78-02	Connecting rod	14	413 10 15-01	Bobbin sensor cpl.	7
413 02 85-01	Foot emb. Unit	14	413 10 64-02	Tension disc set	11
413 02 88-01	Cable emb. Unit	14	413 11 65-02	Hoop 260x200	16
413 02 90-02	PC-board emb unit	15	413 11 67-01	Thread brake	7
413 02 93-01	PCB Y-arm cpl.	15	413 11 71-01	Frontcover	2
413 02 96-01	Board hoop detect cpl.	15	413 11 76-01	Lamp cover	2
413 02 99-01	Stepmotor	15	413 12 20-01	Display glass	2
413 03 02-01	Locking arm	15	413 12 61-01	Bottom cover emb. Unit	14
413 03 10-01	Connector sensor foot	10	413 12 62-01	Top cover emb. Unit	14
413 03 41-01	Pull wire feed dog drop	6	413 12 63-01	Cover emb. Unit	14
413 03 42-01	Insert lever feed lift	6	413 12 64-01	Guide support arm	14
413 03 44-02	Screw, reverse threaded	6	413 12 65-01	Y-arm cover emb. Unit	14
413 03 92-01	Presserfoot holder cpl.	10	413 12 66-01	Motor cover emb. Unit	14
413 04 03-01	Hand wheel	9	413 13 64-03	Guide	2
413 04 04-01	Screw	10	413 13 66-03	Cover sewing head	2
413 04 19-01	Lower IDT linkage	12	413 13 99-01	Bushing	3
413 04 20-01	Clamping IDT	12	413 14 07-01	Washer	12
413 04 22-01	Feeder bearing IDT	12	413 14 08-01	Toogle link, IDT	12
413 04 25-01	Rear crank IDT	12	413 14 22-01	Mechanism feed dog drop cpl.	6
413 04 26-01	Bushing	12	413 15 93-45	PC- board	5
413 04 29-01	Clamp	11	413 15 95-01	Spring	11
413 04 30-01	Link IDT	12	413 16 21-01	Reflector	2

<b>Part nr</b>	<b>Description</b>	<b>Page</b>	<b>Packaging material Creative 2.0</b>
413 16 84-01	LCD	2	412 56 73-03 Cartboard cartridge
413 16 94-01	Screw	6	412 56 74-06 Wraparound
413 16 97-01	Keyboard	2	413 15 98-01 Gable right
413 18 18-02	Bulb 24V 5W	10	413 07 60-01 Gable left
413 18 18-03	Bulb 24V 3W	2	413 07 62-01 Top foam
413 19 00-01	Thread guide	4	413 07 58-01 Freearm block
413 24 42-01	Sewing head frame cpl.	10	413 07 64-01 Tray
720 11 96-50	Shaft	11	
725 52 28-05	Screw	10	
728 52 22-05	Screw	10	
728 52 87-05	Screw	8	
735 31 06-20	C-clip	11	
735 31 08-20	C-clip	15	
735 31 09-20	Snap ring E-5	6	
735 31 09-20	C-clip	12	
735 61 24-40	C-clip	7,12	
735 61 36-40	C-clip	5,10	
735 61 53-40	C-clip	10	
820 773 096	Presserfoot	10	
820 793 096	Bobbin 10 pack	8	
12-618140-45/000	C-clip	4	
92 330 111-91000	Motor	5	
93-030174-35/000	Guide pin	4	
93-032050-25/000	Thread guide	4	
93-039068-05/000	Thread guidance	4	
<b>Standard Accessories Creative 2.0</b>			
413 02 16-13	Accessory bag cpl.		
401 55 55-01	Brush		
412 38 15-01	Screwdriver		
401 53 99-01	Button hole knife		
413 10 56-01	Clearance plate		
820 793-096	Bobbin 10 pack		
820 774-096	Presserfoot 1A Fancy stitchfoot w IDT		
820 256-096	Presserfoot 3 Blindhemfoot w IDT		
820 248-096	Presserfoot 4 Zipperfoot		
820 672-096	Presserfoot 5M Man. Buttonhole foot		
820 671-096	Presserfoot 6A Emb/sensormatic freemotion foot		
820 249-096	Presserfoot 7 Rolled hem foot w IDT		
412 61 07-01	Felt pad		
620 07 11-96	Needle box, Inspira		
412 57 01-01	Sleeve, lamp		
412 39 77-01	Thread net 15X100		
413 05 16-02	Spoolholder 35mm		
413 05 16-03	Spoolholder 45mm		
820 251-096	Edge ruler		
<b>Users Guide Creative 2.0</b>			
Swe	413 17 26-01		
Den	413 17 26-06		
Isl	413 17 26-07		
Jap	413 17 26-10		
Fin	413 17 26-11		
Norw	413 17 26-21		
Eng	413 17 26-26		
Fra	413 17 26-31		
Holl	413 17 26-36		
Ita	413 17 26-41		
Spa	413 17 26-46		
Ger	413 17 26-51		
Rus	413 17 26-56		
Pol	413 17 26-82		
Cze	413 17 26-90		
Communication CD	413 17 31-96		